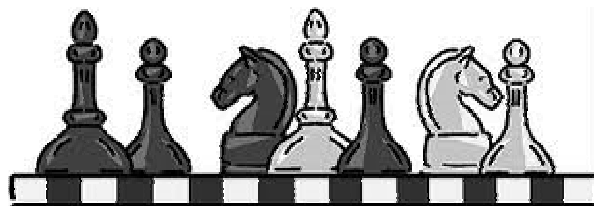


Chess in the Antelope Valley



Chess E-Newsletter of the Antelope Valley

Vol III No 4

Editor: Daa (day) Mahowald daa@mahowald.org

1 April, 2012

AV CHECKMATE CHESS CLUB PROUDLY PRESENTS
ANTELOPE VALLEY MASTERS
OPEN AND UNDER 1600 CHAMPIONSHIP

MARCH 25 2012
4 ROUND SWISS G/40 DELAY 5



OPEN: 1ST PLACE \$200 + TROPHY
2ND PLACE \$100 + TROPHY
3RD PLACE BOOK

< 1600: 1ST PLACE \$150 + TROPHY
2ND PLACE \$75 + TROPHY
3RD PLACE BOOK

ENTRY: \$35 BY MARCH 18, 2012
\$40 AFTER

REGISTRATION:

SITE: 1:00PM

PHONE: 661-917-7628

WEB: WWW.PUSHMYPAWN.COM

ROUNDS: 1:15, 2:45, 3:15, 4:45 PM

LOCATION:

LANCASTER MASONIC LODGE

44702 CEDAR AVE

LANCASTER, CA 93534



A Masters' Game

Caro-Kann: Two Knights Variation

Analysis by Matt Mahowald
and Rybka 2.2n2 mp 32

The tournament described at the right has both an U1600 and an OPEN section. That means you can both play and watch some excellent chess!

Below is an example of the kinds of challenging matches you'll have a chance to observe. This one was played in the February QUADs at the *AV Chess House*. Ruben Ondangan (2165) was white against Matt Mahowald (2154).

1.e4	c6
2.Nf3	d5
3.Nc3	Bg4?!
4.h3	Bh5
5.g4	Bg6
6.exd5	cxd5
7.Bb5+	Nc6
8.Ne5	Rc8

Many would "Fear the Pin" and avoid these lines. The problem with blacks position is not the pin, but the Bishop on g6.

9.Qf3

last book move [9.h4!]

9. ... Nf6

10.d3 d4

(Continued on page 4.)

2nd Annual Chess Essay Contest!

Win a Chess Set

The AV Chess House is sponsoring the 2nd Annual Chess Essay Contest open to any K-8 student who resides in Antelope Valley. There is no fee to enter the contest. The title of the essay must be "Chess is Valuable Because ..." and the essay must discuss the benefits gained from learning and playing chess and should include a positive experience you've had through chess. Essays must be at least 200 words but no more than 500 words and will be judged in three categories: Grades K-2, Grades 3-5, Grades 6-8. ***The winner in each category will receive a Tournament Quality Chess Set.*** Winners will be announced May 14.



The decision of the judges is final. Send contest submissions to: Chess Essay Contest, 3710 Neola Way, Lancaster CA 93536. Entries must be received on or before Monday, May 7, 2012. Entries must be double spaced, either handwritten (no cursive) or typed. Entries must include a cover sheet with the following information: Entrant's full name and address; Entrant's age, grade, and school name; Parent/guardian's name, phone number, and email address. All submissions become the property of *The AV Chess House*. In the event no suitable entries are received in a category, *The AV Chess House* reserves the right to eliminate that category and award a second winner from one of the remaining categories.

Fair Season Has Begun!

From Mid March through October, fairs abound around the Antelope Valley. There are major fairs such as the Almond and Poppy Festivals and the AV Fair. There are also smaller events such as Resource Fairs, fundraisers, carnivals, mall or sidewalk sale events ... and the list goes on.

The *AV Chess House* makes every effort to provide a chess presence at these events in order to encourage the interest and enjoyment of chess in the Antelope Valley.

If you are organizing an event (or know of an upcoming event), contact daa@mahowald.org to arrange for a free chess activity to be included. Similarly, if you want to volunteer to staff some chess activities, contact daa@mahowald.org.

For most events, the *AV Chess House* can bring its own tables/chairs/canopy. However, for the Poppy Festival, 8 6' tables, 30 chairs, and 3 canopies are needed. If you can lend any of this equipment from Friday afternoon, 4/20, through Sunday evening, 4/22, please contact daa@mahowald.org.

Next QUADs Tourney

When: Saturday, April 7
10am – 2pm
Where: *AV Chess House*.
Time Control: Game/30
Prizes: 1st \$30 each QUAD
2nd \$15 each QUAD
Rounds: 10:15, 11:30, 12:45
Required: PreRegistration &
USCF Membership
PreRegister: daa@mahowald.org
Fee: \$15 on-or-before 4/4
\$20 after 4/4

\$10 if prepaid by 3/28
Non refundable.

Chess Tourney on Edwards Air Force Base!

Who: Open to anyone age 6 and up.

What: Sections: ages 6-8, 9-12, 13-18, Open

Rounds: 3

Time Control: G/30

Where: Edwards Air Force Base's Oasis Community Center

When: Friday, April 20, 6pm

Why: This annual tournament is held to crown the Base Chess Champion.

How: If you already have access to the Base, register at 6pm on Friday, April 20

If you need help getting on the base, contact gregory.slay@edwards.af.mil by Thursday, April 19.



Share Your Chess News!

The *Chess in the Antelope Valley* e-newsletter welcomes all Antelope Valley chess news. If you or another Antelope Valley resident had a great chess experience, whether or not the chess took place in Antelope Valley, let us know. Similarly, if you know of any upcoming Antelope Valley chess events or activities, share the news with us. All chess items should be sent to the e-newsletter editor daa@mahowald.org

CHECK CHESS CLUB



The Checkmate Chess Club meets at the *AV Chess House* on Wednesdays, 5-6:30 pm. The club is open to all ages and skill levels. Chess sets are provided. For more information, contact daa@mahowald.org

PREORDER YOUR COPY OF THE
ANTELOPE VALLEY MASTERS CHRONICLE:
ANNOTATED GAMES AND COLLECTION

\$10

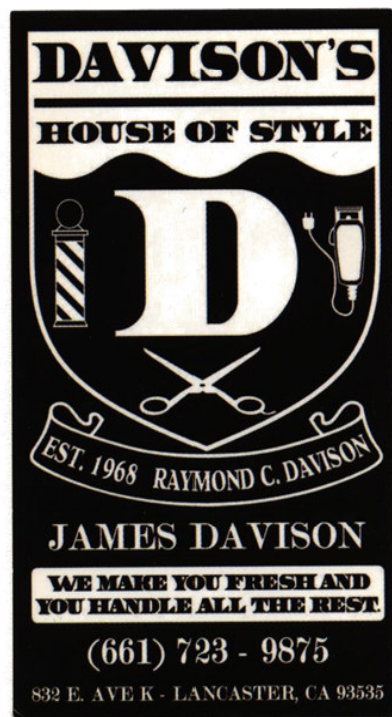
www.PushMyPawn.com

Visit *The AV Chess House* website at chess4.us

Chess @ The Barbershop

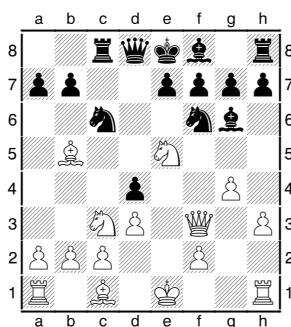


Davison's House of Style, located at the intersection of Challenger and East Ave K in Lancaster has a permanent chess table set up for those who walk in for a haircut – or to get in a chess game or two.



A Masters Game

(Continued from page 1.)



[10...e6 11.h4 h5 12.g5 Ng4 Is better than what I played, but I never liked the doubled g pawns.]

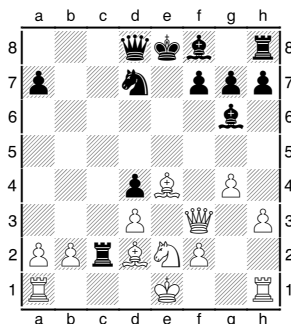
11.Nxc6 bxc6
12.Bxc6+ Nd7
13.Ne2 e5
14.Bd2

[14.Qd5 f6= Whites pressure is somewhat transitory. Eventually black gets pressure on the queenside. 15.Bd2 Bf7 16.Qb5 Be6 17.c3 dxc3 18.Bxc3 Kf7 19.d4 a6=]

14... e4!?

Wanting to make the best of (what I thought was) a bad position by complications. I saw the moves played in the game out to 20...Kg8, but did not see the implications of 16.Bxg6. [14...Bd6!= 15.Qd5]

15.Bxe4± Rxc2

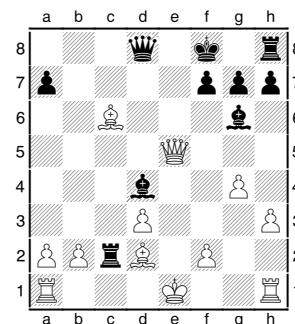


16.Nxd4

[16.Bxg6! Making space for the queen gives White the edge. 16...hxg6 17.Kd1 Rxb2 18.Nxd4 Ne5±]

16... Ne5!=
17.Qe3 Bc5

18.Bc6+ Kf8
19.Qxe5 Bxd4



20.Bb4+?!

[20.Qd5 Qxd5 (20...Qf6 No longer works now 21.0-0 Rxd2= 22.Qd7 Bxf2+ 23.Kh1 Be4+)]

20... Kg8±
21.Qd5 Qxd5

[21...Qf6! 22.0-0 Bxf2+ 23.Kh1 Qh4 24.Qg2 h5±]

22.Bxd5 Rxb2

I could see that the b pawn was critical, but this move lets the queen rook out. [22...Bxd3]

23.Rc1 h5
24.Ba3

[24.Bc3 Bxf2+ 25.Kd1=]

24...Rxf2

Both players focus on Whites 2nd rank

25.Rc4 Bb6
26.d4 Rf4
27.Bb2?

White wanted to hold onto the pawn, but its not at all possible. [27.Rc8+!? Kh7 28.Rxh8+ Kxh8 29.Bc5=]

27... Kh7±
28.Rh2

[28.Bc6 Rd8±]

28... Rd8!?

[28...Bd3 29.Rc6 Bb5 30.Rxb6 axb6 31.gxh5 Kg8±]

29.gxh5??

White, in time trouble, panics.

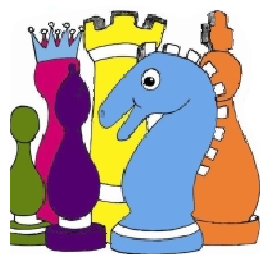
[29.Bc6±]

29... Bd3+
30.Rf2

[30.Rc3 Ba5 31.Kd2 Rxd4 32.Bb3+]

30... Rxf2
31.Kxf2 Bxc4
32.Bxc4 Bxd4+
33.Bxd4 Rxd4
34.Bxf7?? Rf4+ 0-1

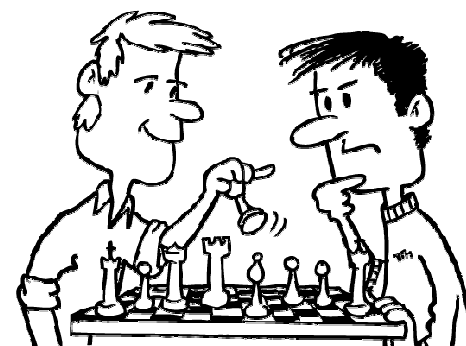
Summer Chess Camps



The AV Chess House is offering Chess Camps this summer! Typically, a Chess Camp is a 5-day, 4-hour-a-day activity designed around a specific age group or skill level. However, a Chess Camp can be tailored to an organization or group's needs and can be held at the organization's facilities or at *The AV Chess House*. To arrange a Summer Chess Camp for your organization or group: daa@mahowald.org

Monthly QUADs Provide 4 Hours of Chess Fun

Since December 2010, *The AV Chess House* has hosted a monthly United States Chess Federation (USCF) rated tournament. This first-Saturday-of-every-month event starts at 10am and finishes by 2pm. In those four hours, participants play three USCF-rated chess games, compete for prizes – 1st Place \$30; 2nd Place \$15, and have the opportunity to go over their games and analyze them to improve their play. Each player is grouped with 3 others of their approximate USCF rating and plays each member of their group. Pre-registration is required through email to daa@mahowald.org The next QUADs are



Saturday, April 7. Entry Fee: \$10 if prepaid by 3/28; \$15 if email-registered on-or-before 4/4; \$20 after 4/4.

Chess Presentations for Teachers



Learn how to improve your students' reading and math skills through chess! Professional Chess Teacher Daa Mahowald presents Chess Mini Games[®] which teachers can quickly and easily learn and teach to their students even if they don't already know how to play chess. This presentation is geared towards Preschool, Primary, or Elementary teachers. Research has shown that the pattern recognition skills needed in math and reading are readily improved through chess. For more information or to schedule a presentation for your group or school district: daa@mahowald.org

ACTON AGUA DULCE NEWS & eNEWS

Since 1983 - aadnews.com

LAKE LA NEWS & eNEWS

Since 1986 - lakelaneews.com

ROSAMOND NEWS & eNEWS

Since 1985 - rosamondnews.com

(661) 269-1169 • 256-0149 • 264-0578

Most Local News
Anywhere
(subscribe online -
\$33/yr)

We File &
Publish DBA's
legaldesk.net

CHess OPPORTUNITIES

FOR ALL AGES

Monthly USCF-rated QUADs 10am – 2pm, 1st-Saturday-of-every-month. LOC *AV Chess House*. TC G/30. PZ 1st \$30; 2nd \$15. EF \$15 on-or-before the Thursday before the tourney; \$20 after that. Pre-REG req – no walk-ins accepted. RDs 10:15, 11:30, 12:45. USCF req. CONTACT: daa@mahowald.org *QUADs COST ONLY \$10 IF PREPAID BY 2/25 (non refundable)*

Check Chess Club 5-6:30pm Wednesdays. LOC *AV Chess House*, 3710 Neola Way (near 37th & West Ave. J) Free club open to all ages and ability levels. Chess sets are provided – just drop in for a game or ten. No food allowed on the premises. Please park across the street from the building. Includes: free small-group lessons. CONTACT: daa@mahowald.org

Edwards Air Force Base Annual Chess Tournament 6pm, Friday, April 20. FULL DETAILS see page 3 of this e-newsletter. CONTACT: gregory.slay@edwards.af.mil

Improve Your Chess Play with Private Lessons Individual and small-group private chess lessons for Beginners, Beyond Beginners, and Intermediates of all ages. LOC *AV Chess House*. CONTACT: daa@mahowald.org

Bring Chess to Your Client Base Whether you work with seniors, preschoolers, families, special-needs populations, etc., *The AV Chess House* can provide a chess program tailored to your needs. CONTACT: daa@mahowald.org

Sunday Tournament 2pm Sundays. LOC Mason Lodge, 44702 Cedar Ave, Lancaster. TC G/30. PZ TBA. EF \$10. REG at door. RDs TBA. USCF req. CONTACT: knightblitz@verizon.net 661-917-7628

Chess Night at the Peterson's 6-9:30pm Wednesdays. LOC 4817 Stargazer Place, Palmdale. 5 minute games except first Wednesday of the month when it's SD/30. CONTACT: 661-533-3042.

FOR KIDS

Start a Chess Club at Your Child's School Students who participate in a once-a-week Chess Club reap numerous benefits, especially improvement in math and reading skills. To learn how to start a SCHOOL CHESS CLUB, CONTACT: daa@mahowald.org

Parent & Tot Chess Time Workshops Free Chess Workshops for tots on Fridays, 8-9am (by appointment) at the *AV Chess House*. CONTACT: daa@mahowald.org

FOR ADULTS

Casual Chess at Starbucks A free, casually-organized group of chess players meets at different Antelope Valley Starbucks at a variety of days and times. CONTACT: John Buck 661-816-1423

Chess@BeX 7:30-10pm, Mondays. LOC BeX Bar & Grill, 705 W Lancaster Blvd. Free, casual chess; occasional USCF-rated tourneys. CONTACT: robh.2010@yahoo.com

No Stress Basic Chess for Seniors Workshops Free Chess Workshops for seniors on Fridays, 9:15-10:15am (by appointment) at the *AV Chess House*. CONTACT: daa@mahowald.org

Chess-Themed Birthday Parties

The AV Chess House is offering Chess-Themed Parties! Each party is tailored to fit the client's needs and is held at *The AV Chess House* or at a venue of the client's choosing. A party is three or four hours of chock-full-of-fun-hands-on-chess-activities designed around a specific age group or skill level. To arrange a chess-themed birthday party or other celebration: daa@mahowald.org



Free Workshop How to Start a Chess Club



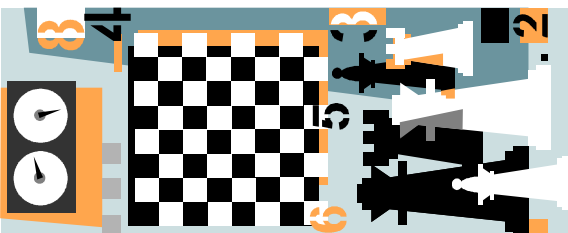
At Your School, Church, or Other Organization

The *AV Chess House* and Grace Resource Center have partnered to present free workshops to provide information and assistance to groups which desire to bring the benefits of chess to their youth.

Typically, three or more adults decide that their children would benefit from learning and playing chess. For the first time in the Antelope Valley, there is now a free resource for these adults to guide them in the development of a chess program.

Professional Chess Teacher and Coach, Ms. Daa, presents a free 90-minute workshop which goes over the various steps involved in starting and running a club. Attendees are welcome to email Ms. Daa with further questions as they begin/build/maintain their club.

To schedule a free How to Start a Chess Club workshop for your group, contact daa@mahowald.org 661-466-6907.



The Benefits of Chess for Youth

Math Development
Science Achievement
English Skills
Communication Abilities
Creativity
Concentration
Logical Reasoning
Critical Thinking
Memory
Problem Solving
Intellectual Maturity
Self Esteem
Analyzing Actions & Consequences
Planning Ahead
Complex Decision Making
Pattern Recognition
Sportspeopleship
Dealing With Undesirable Situations
Learning from Mistakes
Responsibility for Actions
Discipline
Measurable Individual Accomplishments
Team Spirit
Commitment
Academic Competition
Belonging to a Positive and Diverse Crowd
Cultural Enrichment
Social Skills
Empathetic Awareness
Improved Attendance

The Benefits of Chess for PreSchoolers

- ✓ fun social activity
- ✓ gently engages the brain
- ✓ stimulates the imagination
- ✓ improves concentration
- ✓ boosts memory
- ✓ enables decision making
- ✓ builds friendships
- ✓ encourages pattern recognition needed in the learning of reading and math

Grace Resource Center Announces Free Chess Workshops



Parent & Tot Chess Time

for 3 to 5 year olds and their adults

Grace Resource Center has partnered with the *AV Chess House* to **provide free Chess Workshops for tots** by appointment on Fridays, 8-9am at the AV Chess House, 3710 Neola Way, Lancaster.

Chess has been proven to be a fun and interesting path towards ***reading and math readiness***. The free, hands-on Chess Workshops provide parents with an easy method for building on the basics of chess to enable their children to ***become ready for Kindergarten***.

To register for a free Chess Workshop, contact daa@mahowald.org



No Stress Basic Chess for Seniors

for those born during or before 1962

Grace Resource Center has partnered with the *AV Chess House* to provide **free Chess Workshops for seniors** by appointment on Fridays, 9:15-10:15 am at the AV Chess House, 3710 Neola Way, Lancaster.

Chess has been proven to be a fun and interesting path towards ***keeping the mind fresh and warding off Alzheimer's***. The free, hands-on Chess Workshops provide seniors with an easy method for building on the basics of chess to enable them to ***stay alert and active in the golden years***.

To register for a free Chess Workshop, contact daa@mahowald.org

Fun Chess Fact

The number of possible, unique chess games is far greater than the number of electrons in the universe! The number of electrons is estimated to be a mere 10^{79} , while the number of unique chess games is 10^{120} . In English, that's a thousand trillion, trillion, trillion, trillion, trillion, trillion, trillion, trillion, trillion games!